



THE HORIZON
COLLECTION
MARBELLA

READY TO MOVE IN

THE AZURE

VILLA WITH AMAZING SEA VIEWS

PANORAMIC SEA VIEWS

Luxury villa in contemporary architecture combined with materials and finishes of the highest quality in an exclusive residential area in Marbella. South facing main reception room, open plan entertaining, dining, kitchen and reception areas and direct access to the terraces with uninterrupted views of the Mediterranean coast of Africa, the Golf Valley and La Concha. The villa features a contemporary living room with an open gallery, floating staircases with stainless steel railings and stunning panoramic views from every angle. The basic concept of the design of the living environment was to create a villa that is at the same time open to nature but also sufficiently protected against the climate. The wonderful sea views are maximally utilized with large glass windows on the facades. Large elevated first floor terraces to the front offering superb southerly views to all first floor bedroom suites.

- Amazing seaviews
- 10 minutes to Puerto Banús
- 5 minutes to the beach
- Highest quality throughout
- Large glass windows
- Living room with open gallery
- Large elevated terraces
- Fully fitted kitchen
- Salt water pool
- 4 bedrooms / 4 bathrooms

THE AZURE
HORIZON COLLECTION

READY TO MOVE IN
A CONTEMPORARY MASTERPIECE

FOR 1.385.000€



I N T E R N A L & E X T E R N A L L I V I N G



A hidden gem, this stunning contemporary villa with clean lines and open spaces offers large glass windows and fantastic sea views. The lobby gives way to the bright, contemporary living room with stunning panoramic views from every angle.

THE AZURE
HORIZON COLLECTION

"THE AZURE"



H I G H E S T Q U A L I T Y T H R O U G H O U T



- Plot size 1.074 m²
- Total built 446.98 m²
- 4 bedrooms
- 4 bathrooms
- 1.385.000€

THE AZURE
HORIZON COLLECTION



LUXURY AND MODERN LIVING

The living room has an open gallery, stainless steel railings and a large fireplace. The fully equipped open plan kitchen overlooks the dining room which in turn has access to the terrace, garden and the pool. A vision of luxury & modern living.



THE AZURE
HORIZON COLLECTION

GROUND FLOOR 115.26 M²

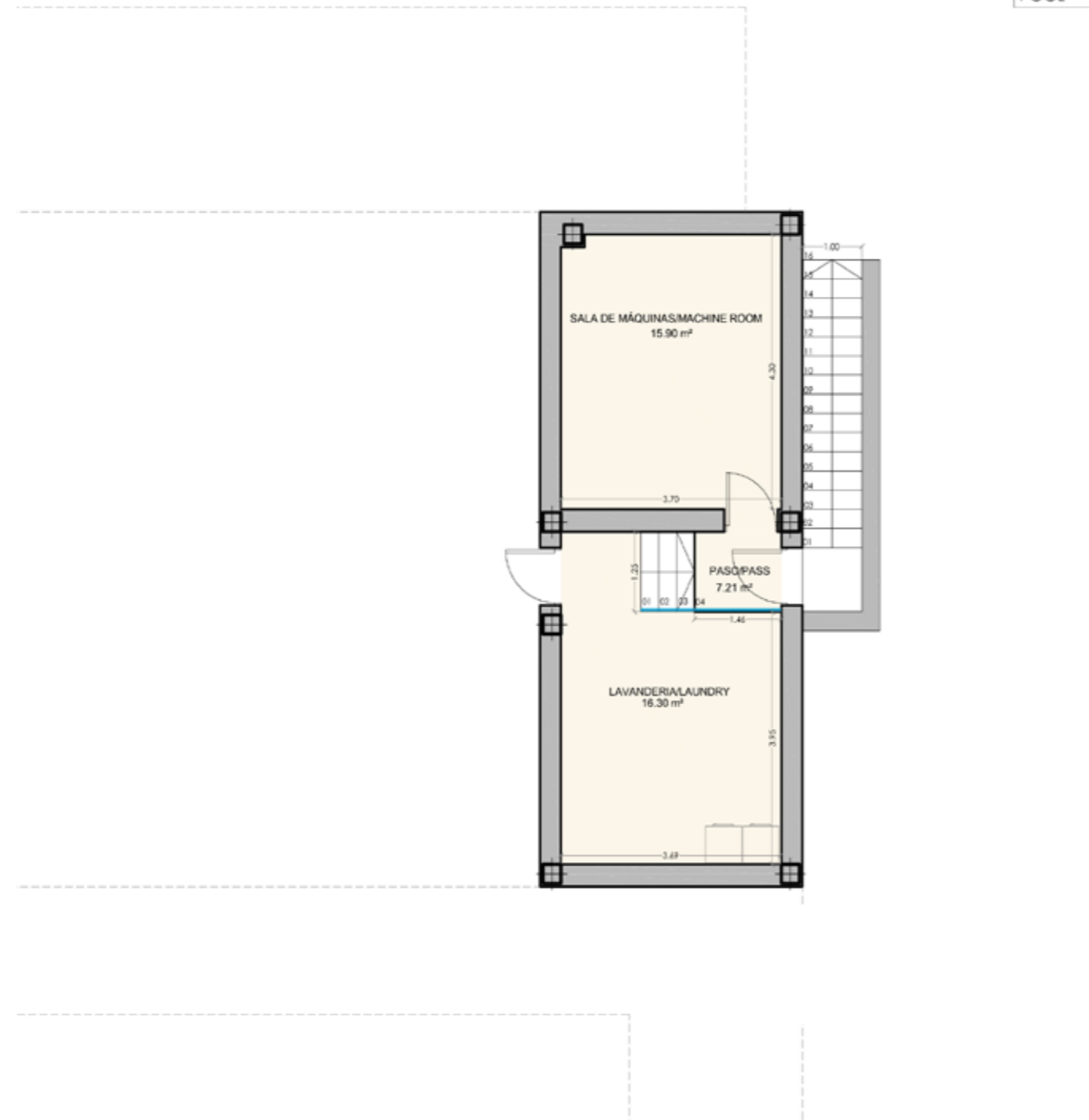


FIRST FLOOR 98.30 M²



BASEMENT 46.42 M²

POOL



PLOT 1.074 M² BUILT 446.98 M²



THE AZURE
HORIZON COLLECTION



C O N T E M P O R A R Y A R C H I T E C T U R A L S T Y L E

THE AZURE
HORIZON COLLECTION

READY TO MOVE IN